

ASSEMBLY INSTRUCTIONS FOR VARSITY GAMEDAY 24' GOAL

1. Unpack all parts and check against parts list.
2. Slide 24 standoffs in top rail approx. 12" apart. See figure 2.
3. Attach top corners to top rail with 3/8" x 7/8" socket head bolts, 3/8" lock washers, & 3/8" flat washers. See figure 3.
4. Attach back hoops to right and left posts using 3/8" x 3" socket head bolts, 3/8" flat washers, and 3/8" lock nuts. See figure 5.
5. Install 5/16" x 4" eyebolts, 5/16" flat washers and 5/16" locknuts into back hoops. See figure 6.
6. Stand up assembled goal and attach back rail (if supplied) to back hoops using back rail clamps, 3/8" x 2 1/2" carriage bolts, 3/8" flat washers, & 3/8" hex nuts. See figure 8.
7. Attach ground anchor plates (4) to ground anchors. Place 2 on the back rail and 1 on each back hoop. See figure 7 & 9.
8. Attach net to standoffs.

PARTS LIST FOR GOAL

<u>QTY</u>	<u>DESCRIPTION</u>
1	Top Rail
1	Back Rail
1	Left Post
1	Right Post
2	Back Hoop
4	Ground Anchor Bracket
4	Ground Anchor
24	Standoff
2	Back Rail Clamp

HARDWARE FOR GOAL

<u>QTY</u>	<u>DESCRIPTION</u>
4	3/8" x 1 1/4" Socket head bolt
4	3/8" x 3" Socket head bolt
6	3/8" Lock washer
10	3/8" Flat washer
2	5/16" x 4" Eye bolt
4	5/16" Flat washer
2	5/16" Lock nut
2	3/8" x 2 1/2" Carriage Bolt
2	3/8" Hex Nut

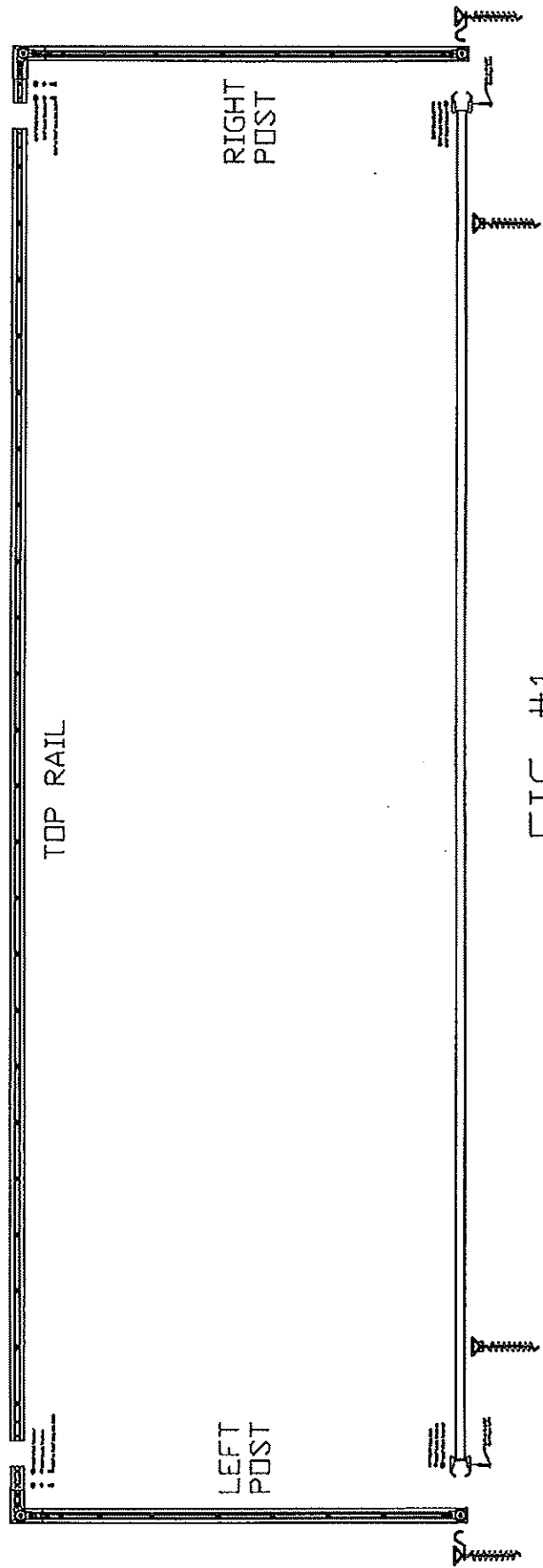
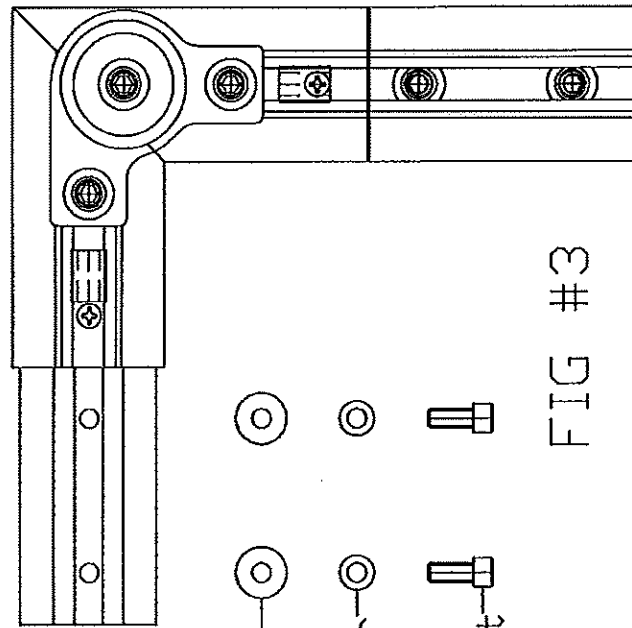


FIG #1



- 3/8" Flat Washer
- 3/8" Lock Washer
- 3/8" x 7/8" Soc. Hd. Bolt

FIG #3

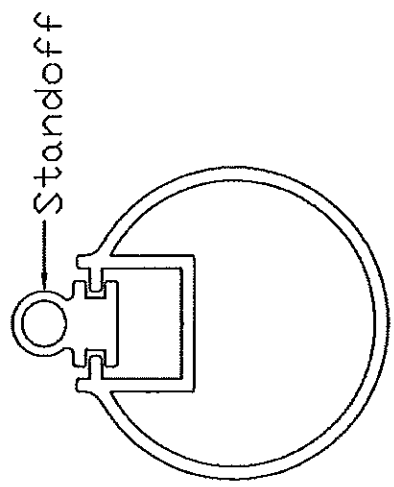
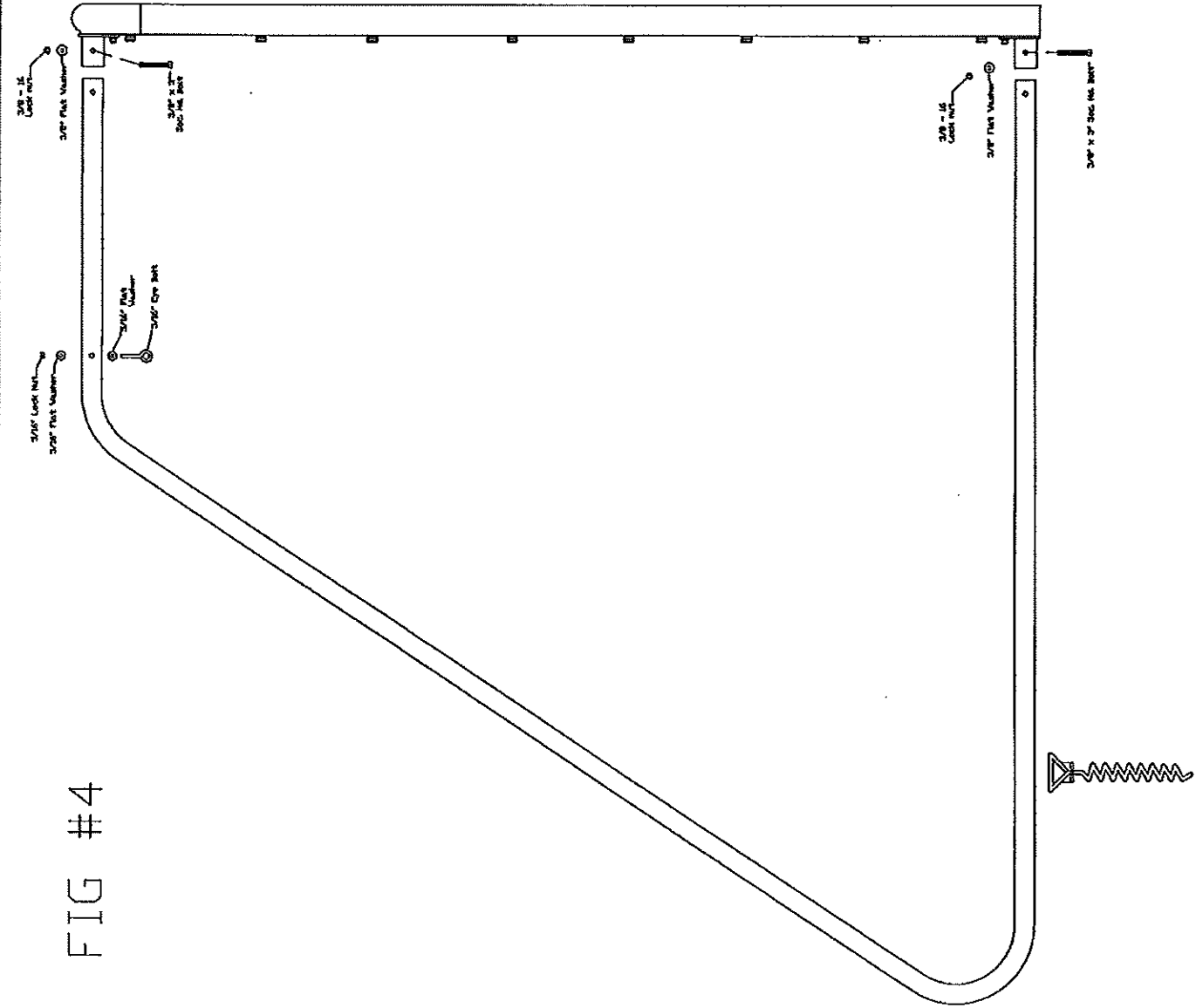


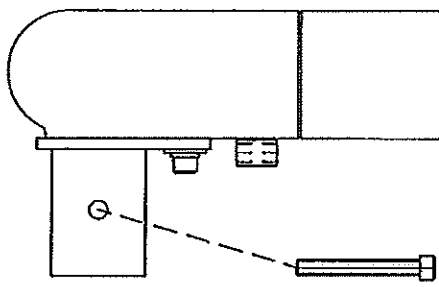
FIG #2

FIG #4



3/8 - 16
Lock Nut

3/8" Flat Washer



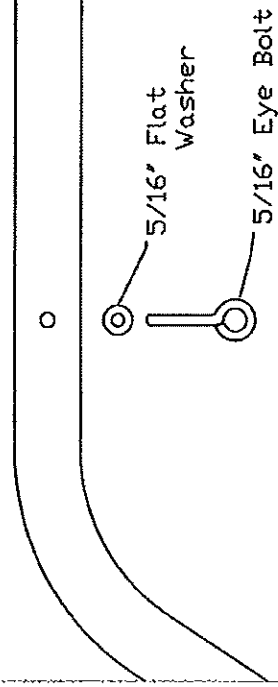
3/8" x 3"
Soc. Hd. Bolt

FIG #5

FIG #6

5/16" Lock Nut

5/16" Flat Washer



5/16" Flat
Washer

5/16" Eye Bolt

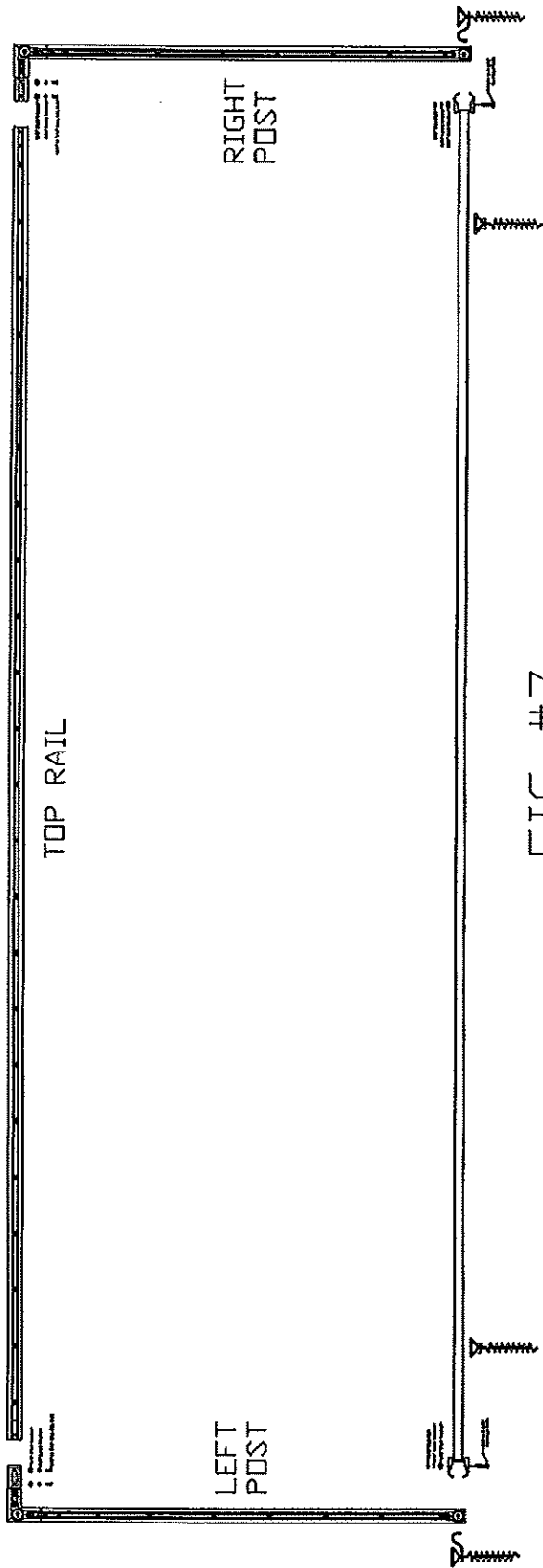


FIG #7

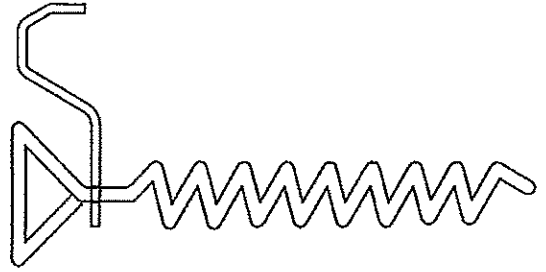
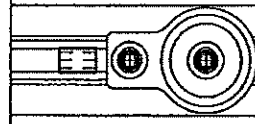
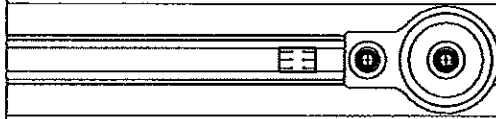
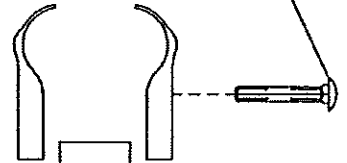


FIG #9



- 3/8" Hex Nut — [Hex Nut Symbol]
- 3/8" Lock Washer — [Lock Washer Symbol]
- 3/8" Flat Washer — [Flat Washer Symbol]



3/8 x 2 1/2"
Carriage bolt

FIG #8